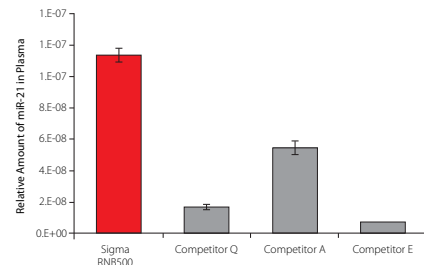


# DNA & RNA Purification for Plasma & Serum

## Purify with Sigma®

Simplify your purification process with the new GenElute™ kits for plasma and serum. These kits are specifically designed:

- For high-quality isolation of RNA, DNA or both
- Without phenol extractions or carrier RNA
- To accommodate versatile plasma/serum input ranges



For more information, visit [sigma.com/nap](http://sigma.com/nap)

Product No.	Product Name	Product Description
RNB500-50RXN	GenElute™ Plasma/Serum RNA Purification Mini Kit	<ul style="list-style-type: none"> <li>• For Plasma/Serum samples between 50-200 µL</li> <li>• Final elution of 10-25 µL of total RNA (including small RNA &lt;200 nt)</li> </ul>
RNB600-20RXN	GenElute™ Plasma/Serum RNA Purification Midi Kit	<ul style="list-style-type: none"> <li>• For Plasma/Serum samples between 250µL – 1.5mL</li> <li>• Final elution of 50-100 µL of total RNA (including small RNA &lt;200 nt)</li> </ul>
DNB600-20RXN	GenElute™ Plasma/Serum Cell-Free Circulating DNA Purification Midi Kit	<ul style="list-style-type: none"> <li>• For Plasma/Serum samples between 1-4 mL</li> <li>• Final elution of 50-100 µL of all sizes of DNA</li> </ul>
RNB700-10RXN	GenElute™ Plasma/Serum RNA Purification Maxi Kit	<ul style="list-style-type: none"> <li>• For Plasma/Serum samples between 2-5mL</li> <li>• Final elution of 50-100µL of total RNA (including small RNA &lt;200 nt)</li> </ul>

Sigma® also provides purification kits for blood!

Cat. No.	Product Description	Pack Sizes
NA2010	GenElute™ Blood Genomic DNA Kit	70 preps
NA2020		350 preps
BLD9601		1 x 96 wells
BLD9604		4 x 96 wells
XNAB2	Extract-N-Amp™ Blood PCR Kit	100 extractions, 100 amplifications
XNAB2R		1000 extractions, 1000 amplifications
XNAB2RE		1000 extractions, 5000 amplifications
XNABS	REExtract-N-Amp™ Blood PCR Kit	10 extractions, 10 amplifications
XNAB		100 extractions, 100 amplifications
XNABE		100 extractions, 500 amplifications

©2015 Sigma-Aldrich Co. LLC. All rights reserved. Sigma and Sigma-Aldrich are trademarks of Sigma-Aldrich Co. LLC, registered in the US and other countries. REExtract-N-Amp, Extract-N-Amp, GenElute and Where bio begins are trademarks of Sigma-Aldrich Co. LLC. Sigma brand products are sold by affiliated Sigma-Aldrich distributors. Purchaser must determine the suitability of the product(s) for their particular use. Additional terms and conditions may apply. Please see product information on the Sigma-Aldrich website at [www.sigmaaldrich.com](http://www.sigmaaldrich.com) and/or on the reverse side of the invoice or packing slip.

SIGMA-ALDRICH®

**SIGMA** Where bio begins™  
Life Science

RTV\_DP  
8.856  
1095  
**LABCO L.L.C.**